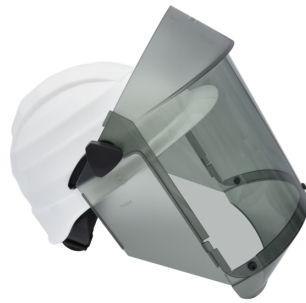


Safety helmet with grey Arc Flash face shield — ATPV 12 Cal/cm² or 25 Cal/cm²



/ Standards

Safety helmet :EN 397 / EN 50365 (Class 0 — 1 kV for use), ANSI Z89.1 (Class E — tested up to 20 kV) Face-shield : EN 166 : 2002 / EN 170 / ANSI Z87.1 / ASTM F 2178 (ATPV = 12 or 25 Cal/cm²) with chin protector, according to reference / GS-ET-29 (class 2 / 7kA, during 0,5 sec)

/ Use

Protection against thermal effect from electrical arc, for head and face.

This PPE (Personal Protective Equipment) is part of the protection, suitable for arc-flash hazard, in addition with clothing and gloves

/ Technical specifications

This kit includes 2 components:

- Protective helmet for electricians,

High density polyethylene (HDPE) helmet shell, with universal side slots for attaching the flip-up screen, Headgear with 4-point textile harness, equipped with a headband with rack and pinion adjustment (53-63 cm head circumference).

- Arc-Flash protective screen,

Light grey colour, anti-fog treatment on the inside and anti-scratch on the outside,

Transparent protection for the lower face and chin, side protection, also transparent, with ATPV 12 or 25 Cal/cm²,

The shield is used in combination with a dielectric helmet, to provide adequate and optimal protection against the risk of Arc-Flash.

Arc Rating Category 2 according to NFPA 70E.

Advantages

- Light Grey lens face shield for a better color recognition during operation on electrical panel,
- Transparent lateral protection, optimizing protection in case of escape (when the operator turns his head),
- Transparent chin protector for optimal field of vision and brightness,
- Ergonomical shape, more compact in confined environments, but gives enough space in front of the face and nose,
- Universal clips allowing a combination with most of safety helmet, if separately sold,